

# HARDINGE 16C

## Dimensions Metric (Steel)

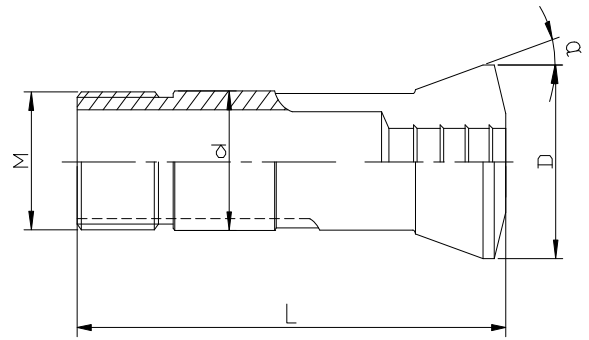
**Specification:** d= 47.98

L=114.5

D=57.4

$\alpha$  : 10°

**Thread:** 47.5X1.75



Order No.	Product Title	Order No.	Product Title
1716R2.0	16C Collet Round 2.0m/m	1716R38.5	16C Collet Round 38.5m/m
1716R2.5	16C Collet Round 2.5m/m	1716R39.0	16C Collet Round 39.0m/m
1716R3.0	16C Collet Round 3.0m/m	1716R39.5	16C Collet Round 39.5m/m
1716R3.5	16C Collet Round 3.5m/m	1716R40.0	16C Collet Round 40.0m/m
1716R4.0	16C Collet Round 4.0m/m	1716R40.5	16C Collet Round 40.5m/m
1716R4.5	16C Collet Round 4.5m/m	1716R41.0	16C Collet Round 41.0m/m
1716R5.0	16C Collet Round 5.0m/m	1716R41.5	16C Collet Round 41.5m/m
1716R5.5	16C Collet Round 5.5m/m	1716R42.0	16C Collet Round 42.0m/m
1716R6.0	16C Collet Round 6.0m/m	<b>Hexagon</b>	
1716R6.5	16C Collet Round 6.5m/m	1716H3.0	16C Collet Hexagon 3.0m/m
1716R7.0	16C Collet Round 7.0m/m	1716H4.0	16C Collet Hexagon 4.0m/m
1716R7.5	16C Collet Round 7.5m/m	1716H5.0	16C Collet Hexagon 5.0m/m
1716R8.0	16C Collet Round 8.0m/m	1716H6.0	16C Collet Hexagon 6.0m/m
1716R8.5	16C Collet Round 8.5m/m	1716H7.0	16C Collet Hexagon 7.0m/m
1716R9.0	16C Collet Round 9.0m/m	1716H8.0	16C Collet Hexagon 8.0m/m
1716R9.5	16C Collet Round 9.5m/m	1716H9.0	16C Collet Hexagon 9.0m/m
1716R10.0	16C Collet Round 10.0m/m	1716H10.0	16C Collet Hexagon 10.0m/m
1716R10.5	16C Collet Round 10.5m/m	1716H11.0	16C Collet Hexagon 11.0m/m
1716R11.0	16C Collet Round 11.0m/m	1716H12.0	16C Collet Hexagon 12.0m/m
1716R11.5	16C Collet Round 11.5m/m	1716H13.0	16C Collet Hexagon 13.0m/m
1716R12.0	16C Collet Round 12.0m/m	1716H14.0	16C Collet Hexagon 14.0m/m
1716R12.5	16C Collet Round 12.5m/m	1716H15.0	16C Collet Hexagon 15.0m/m
1716R13.0	16C Collet Round 13.0m/m	1716H16.0	16C Collet Hexagon 16.0m/m
1716R13.5	16C Collet Round 13.5m/m	1716H17.0	16C Collet Hexagon 17.0m/m
1716R14.0	16C Collet Round 14.0m/m	1716H18.0	16C Collet Hexagon 18.0m/m
1716R14.5	16C Collet Round 14.5m/m	1716H19.0	16C Collet Hexagon 19.0m/m
1716R15.0	16C Collet Round 15.0m/m	1716H20.0	16C Collet Hexagon 20.0m/m
1716R15.5	16C Collet Round 15.5m/m	1716H21.0	16C Collet Hexagon 21.0m/m
1716R16.0	16C Collet Round 16.0m/m	1716H22.0	16C Collet Hexagon 22.0m/m
1716R16.5	16C Collet Round 16.5m/m	1716H23.0	16C Collet Hexagon 23.0m/m
1716R17.0	16C Collet Round 17.0m/m	1716H24.0	16C Collet Hexagon 24.0m/m
1716R17.5	16C Collet Round 17.5m/m	1716H25.0	16C Collet Hexagon 25.0m/m
1716R18.0	16C Collet Round 18.0m/m	1716H26.0	16C Collet Hexagon 26.0m/m
1716R18.5	16C Collet Round 18.5m/m	1716H27.0	16C Collet Hexagon 27.0m/m
1716R19.0	16C Collet Round 19.0m/m	1716H28.0	16C Collet Hexagon 28.0m/m
1716R19.5	16C Collet Round 19.5m/m	1716H29.0	16C Collet Hexagon 29.0m/m
1716R20.0	16C Collet Round 20.0m/m	1716H30.0	16C Collet Hexagon 30.0m/m
1716R20.5	16C Collet Round 20.5m/m	1716H31.0	16C Collet Hexagon 31.0m/m
1716R21.0	16C Collet Round 21.0m/m		

1716R21.5	16C	Collet Round	21.5m/m	1716H32.0	16C	Collet Hexagon	32.0m/m
1716R22.0	16C	Collet Round	22.0m/m	1716H33.0	16C	Collet Hexagon	33.0m/m
1716R22.5	16C	Collet Round	22.5m/m	1716H34.0	16C	Collet Hexagon	34.0m/m
1716R23.0	16C	Collet Round	23.0m/m	1716H35.0	16C	Collet Hexagon	35.0m/m
1716R23.5	16C	Collet Round	23.5m/m	1716H36.0	16C	Collet Hexagon	36.0m/m
1716R24.0	16C	Collet Round	24.0m/m	<b>Square</b>			
1716R24.5	16C	Collet Round	24.5m/m	1716S3.0	16C	Collet Square	3.0m/m
1716R25.0	16C	Collet Round	25.0m/m	1716S4.0	16C	Collet Square	4.0m/m
1716R25.5	16C	Collet Round	25.5m/m	1716S5.0	16C	Collet Square	5.0m/m
1716R26.0	16C	Collet Round	26.0m/m	1716S6.0	16C	Collet Square	6.0m/m
1716R26.5	16C	Collet Round	26.5m/m	1716S7.0	16C	Collet Square	7.0m/m
1716R27.0	16C	Collet Round	27.0m/m	1716S8.0	16C	Collet Square	8.0m/m
1716R27.5	16C	Collet Round	27.5m/m	1716S9.0	16C	Collet Square	9.0m/m
1716R28.0	16C	Collet Round	28.0m/m	1716S10.0	16C	Collet Square	10.0m/m
1716R28.5	16C	Collet Round	28.5m/m	1716S11.0	16C	Collet Square	11.0m/m
1716R29.0	16C	Collet Round	29.0m/m	1716S12.0	16C	Collet Square	12.0m/m
1716R29.5	16C	Collet Round	29.5m/m	1716S13.0	16C	Collet Square	13.0m/m
1716R30.0	16C	Collet Round	30.0m/m	1716S14.0	16C	Collet Square	14.0m/m
1716R30.5	16C	Collet Round	30.5m/m	1716S15.0	16C	Collet Square	15.0m/m
1716R31.0	16C	Collet Round	31.0m/m	1716S16.0	16C	Collet Square	16.0m/m
1716R31.5	16C	Collet Round	31.5m/m	1716S17.0	16C	Collet Square	17.0m/m
1716R32.0	16C	Collet Round	32.0m/m	1716S18.0	16C	Collet Square	18.0m/m
1716R32.5	16C	Collet Round	32.5m/m	1716S19.0	16C	Collet Square	19.0m/m
1716R33.0	16C	Collet Round	33.0m/m	1716S20.0	16C	Collet Square	20.0m/m
1716R33.5	16C	Collet Round	33.5m/m	1716S21.0	16C	Collet Square	21.0m/m
1716R34.0	16C	Collet Round	34.0m/m	1716S22.0	16C	Collet Square	22.0m/m
1716R34.5	16C	Collet Round	34.5m/m	1716S23.0	16C	Collet Square	23.0m/m
1716R35.0	16C	Collet Round	35.0m/m	1716S24.0	16C	Collet Square	24.0m/m
1716R35.5	16C	Collet Round	35.5m/m	1716S25.0	16C	Collet Square	25.0m/m
1716R36.0	16C	Collet Round	36.0m/m	1716S26.0	16C	Collet Square	26.0m/m
1716R36.5	16C	Collet Round	36.5m/m	1716S27.0	16C	Collet Square	27.0m/m
1716R37.0	16C	Collet Round	37.0m/m	1716S28.0	16C	Collet Square	28.0m/m
1716R37.5	16C	Collet Round	37.5m/m	1716S29.0	16C	Collet Square	29.0m/m
1716R38.0	16C	Collet Round	38.0m/m				

<b>HARDINGE 16C</b>							
<b>Dimensions inches (Steel)</b>							
<b>Specification:</b>	d= 1.889"						
	L=4.516"						
	D=2.260"						
$\alpha$ :	10°						
<b>Thread:</b>	1.870"X1.75						
<b>Order No.</b>	<b>Product Title</b>			<b>Order No.</b>	<b>Product Title</b>		
1716R0.0781	16C	Collet Round	.0781" (5/64")	1716R1.4688	16C	Collet Round	1.4688" (1-15/32")
1716R0.0938	16C	Collet Round	.0938" (3/32")	1716R1.4844	16C	Collet Round	1.4844" (1-31/64")
1716R0.1094	16C	Collet Round	.1094" (7/64")	1716R1.5000	16C	Collet Round	1.5000" (1-1/2")
1716R0.1250	16C	Collet Round	.1250" (1/8")	1716R1.5156	16C	Collet Round	1.5156" (1-33/64")
1716R0.1406	16C	Collet Round	.1406" (9/64")				

1716R0.1562	16C	Collet Round	.1562" (5/32")	1716R1.5312	16C	Collet Round	1.5312" (1-17/32")
1716R0.1719	16C	Collet Round	.1719" (11/64")	1716R1.5469	16C	Collet Round	1.5469" (1-35/64")
1716R0.1875	16C	Collet Round	.1875" (3/16")	1716R1.5625	16C	Collet Round	1.5625" (1-9/16")
1716R0.2031	16C	Collet Round	.2031" (13/64")	1716R1.5781	16C	Collet Round	1.5781" (1-37/64")
1716R0.2188	16C	Collet Round	.2188" (7/32")	1716R1.5938	16C	Collet Round	1.5938" (1-19/32")
1716R0.2344	16C	Collet Round	.2344" (15/64")	1716R1.6094	16C	Collet Round	1.6094" (1-39/64")
1716R0.2500	16C	Collet Round	.2500" (1/4")	1716R1.6250	16C	Collet Round	1.6250" (1-5/8")
1716R0.2656	16C	Collet Round	.2656" (17/64")	<b>Hexagon</b>			
1716R0.2812	16C	Collet Round	.2812" (9/32")	1716H0.1250	16C	Collet Hexagon	.1250" (1/8")
1716R0.2969	16C	Collet Round	.2969" (19/64")	1716H0.1562	16C	Collet Hexagon	.1562" (5/32")
1716R0.3125	16C	Collet Round	.3125" (5/16")	1716H0.1875	16C	Collet Hexagon	.1875" (3/16")
1716R0.3281	16C	Collet Round	.3281" (21/64")	1716H0.2188	16C	Collet Hexagon	.2188" (7/32")
1716R0.3438	16C	Collet Round	.3438" (11/32")	1716H0.2500	16C	Collet Hexagon	.2500" (1/4")
1716R0.3594	16C	Collet Round	.3594" (23/64")	1716H0.2812	16C	Collet Hexagon	.2812" (9/32")
1716R0.3750	16C	Collet Round	.3750" (3/8")	1716H0.3125	16C	Collet Hexagon	.3125" (5/16")
1716R0.3906	16C	Collet Round	.3906" (25/64")	1716H0.3438	16C	Collet Hexagon	.3438" (11/32")
1716R0.4062	16C	Collet Round	.4062" (13/32")	1716H0.3750	16C	Collet Hexagon	.3750" (3/8")
1716R0.4219	16C	Collet Round	.4219" (27/64")	1716H0.4062	16C	Collet Hexagon	.4062" (13/32")
1716R0.4375	16C	Collet Round	.4375" (7/16")	1716H0.4375	16C	Collet Hexagon	.4375" (7/16")
1716R0.4531	16C	Collet Round	.4531" (29/64")	1716H0.4688	16C	Collet Hexagon	.4688" (15/32")
1716R0.4688	16C	Collet Round	.4688" (15/32")	1716H0.5000	16C	Collet Hexagon	.5000"(1/2")
1716R0.4844	16C	Collet Round	.4844" (31/64")	1716H0.5312	16C	Collet Hexagon	.5312"(17/32")
1716R0.5000	16C	Collet Round	.5000"(1/2")	1716H0.5625	16C	Collet Hexagon	.5625" (9/16")
1716R0.5156	16C	Collet Round	.5156" (33/64")	1716H0.5938	16C	Collet Hexagon	.5938" (19/32")
1716R0.5312	16C	Collet Round	.5312" (17/32")	1716H0.6250	16C	Collet Hexagon	.6250" (5/8")
1716R0.5469	16C	Collet Round	.5469" (35/64")	1716H0.6562	16C	Collet Hexagon	.6562" (21/32")
1716R0.5625	16C	Collet Round	.5625" (9/16")	1716H0.6875	16C	Collet Hexagon	.6875" (11/16")
1716R0.5781	16C	Collet Round	.5781" (37/64")	1716H0.7188	16C	Collet Hexagon	.7188" (23/32")
1716R0.5938	16C	Collet Round	.5938" (19/32")	1716H0.7500	16C	Collet Hexagon	.7500" (3/4")
1716R0.6094	16C	Collet Round	.6094" (39/64")	1716H0.7812	16C	Collet Hexagon	.7812" (25/32")
1716R0.6250	16C	Collet Round	.6250" (5/8")	1716H0.8125	16C	Collet Hexagon	.8125" (13/16")
1716R0.6406	16C	Collet Round	.6406" (41/64")	1716H0.8438	16C	Collet Hexagon	.8438" (27/32")
1716R0.6562	16C	Collet Round	.6562' (21/32")	1716H0.8750	16C	Collet Hexagon	.8750" (7/8")
1716R0.6719	16C	Collet Round	.6719" (43/64")	1716H0.9062	16C	Collet Hexagon	.9062" (29/32")
1716R0.6875	16C	Collet Round	.6875" (11/16")	1716H0.9375	16C	Collet Hexagon	.9375" (15/16")
1716R0.7031	16C	Collet Round	.7031" (45/64")	1716H0.9688	16C	Collet Hexagon	.9688" (31/32")
1716R0.7188	16C	Collet Round	.7188" (23/32")	1716H1.0000	16C	Collet Hexagon	1"
1716R0.7344	16C	Collet Round	.7344" (47/64")	1716H1.0313	16C	Collet Hexagon	1.0313" (1-1/32")
1716R0.7500	16C	Collet Round	.7500" (3/4")	1716H1.0625	16C	Collet Hexagon	1.0625" (1-1/16")
1716R0.7656	16C	Collet Round	.7656" (49/64")	1716H1.0938	16C	Collet Hexagon	1.0938" (1-3/32")
1716R0.7812	16C	Collet Round	.7812" (25/32")	1716H1.1250	16C	Collet Hexagon	1.1250" (1-1/8")
1716R0.7969	16C	Collet Round	.7969" (51/64")	1716H1.1562	16C	Collet Hexagon	1.1562" (1-5/32")
1716R0.8125	16C	Collet Round	.8125" (13/16")	1716H1.1875	16C	Collet Hexagon	1.1875" (1-3/16")
1716R0.8281	16C	Collet Round	.8281' (53/64")	1716H1.2188	16C	Collet Hexagon	1.2188" (1-7/32")
1716R0.8438	16C	Collet Round	.8438" (27/32")	1716H1.2500	16C	Collet Hexagon	1.2500" (1-1/4")
1716R0.8594	16C	Collet Round	.8594" (55/64")	1716H1.2812	16C	Collet Hexagon	1.2812" (1-9/32")
1716R0.8750	16C	Collet Round	.8750" (7/8")	1716H1.3125	16C	Collet Hexagon	1.3125" (1-5/16")
1716R0.8906	16C	Collet Round	.8906" (57/64")	1716H1.3438	16C	Collet Hexagon	1.3438" (1-11/32")

1716R0.9062	16C	Collet Round	.9062" (29/32")	1716H1.3750	16C	Collet Hexagon	1.3750" (1-3/8")
1716R0.9219	16C	Collet Round	.9219" (59/64")	1716H1.4062	16C	Collet Hexagon	1.4062" (1-13/32")
1716R0.9375	16C	Collet Round	.9375" (15/16")	<b>Square</b>			
1716R0.9531	16C	Collet Round	.9531" (61/64")	1716S0.1250	16C	Collet Square	.1250" (1/8")
1716R0.9688	16C	Collet Round	.9688" (31/32")	1716S0.1562	16C	Collet Square	.1562" (5/32")
1716R0.9844	16C	Collet Round	.9844" (63/64")	1716S0.1875	16C	Collet Square	.1875" (3/16")
1716R1.0000	16C	Collet Round	1"	1716S0.2188	16C	Collet Square	.2188" (7/32")
1716R1.0156	16C	Collet Round	1.0156" (1-1/64")	1716S0.2500	16C	Collet Square	.2500" (1/4")
1716R1.0313	16C	Collet Round	1.0313" (1-1/32")	1716S0.2812	16C	Collet Square	.2812" (9/32")
1716R1.0469	16C	Collet Round	1.0469" (1-3/64")	1716S0.3125	16C	Collet Square	.3125" (5/16")
1716R1.0625	16C	Collet Round	1.0625" (1-1/16")	1716S0.3438	16C	Collet Square	.3438" (11/32")
1716R1.0781	16C	Collet Round	1.0781" (1-5/64")	1716S0.3750	16C	Collet Square	.3750" (3/8")
1716R1.0938	16C	Collet Round	1.0938" (1-3/32")	1716S0.4062	16C	Collet Square	.4062" (13/32")
1716R1.1094	16C	Collet Round	1.1094" (1-7/64")	1716S0.4375	16C	Collet Square	.4375" (7/16")
1716R1.1250	16C	Collet Round	1.1250" (1-1/8")	1716S0.4688	16C	Collet Square	.4688" (15/32")
1716R1.1406	16C	Collet Round	1.1406" (1-9/64")	1716S0.5000	16C	Collet Square	.5000" (1/2")
1716R1.1562	16C	Collet Round	1.1562" (1-5/32")	1716S0.5312	16C	Collet Square	.5312" (17/32")
1716R1.1719	16C	Collet Round	1.1719" (1-11/64")	1716S0.5625	16C	Collet Square	.5625" (9/16")
1716R1.1875	16C	Collet Round	1.1875" (1-3/16")	1716S0.5938	16C	Collet Square	.5938" (19/32")
1716R1.2031	16C	Collet Round	1.2031" (1-13/64")	1716S0.6250	16C	Collet Square	.6250" (5/8")
1716R1.2188	16C	Collet Round	1.2188" (1-7/32")	1716S0.6562	16C	Collet Square	.6562" (21/32")
1716R1.2344	16C	Collet Round	1.2344" (1-15/64")	1716S0.6875	16C	Collet Square	.6875" (11/16")
1716R1.2500	16C	Collet Round	1.2500" (1-1/4")	1716S0.7188	16C	Collet Square	.7188" (23/32")
1716R1.2656	16C	Collet Round	1.2656" (1-17/64")	1716S0.7500	16C	Collet Square	.7500" (3/4")
1716R1.2812	16C	Collet Round	1.2812" (1-9/32")	1716S0.7812	16C	Collet Square	.7812" (25/32")
1716R1.2969	16C	Collet Round	1.2969" (1-19/64")	1716S0.8125	16C	Collet Square	.8125" (13/16")
1716R1.3125	16C	Collet Round	1.3125" (1-5/16")	1716S0.8438	16C	Collet Square	.8438" (27/32")
1716R1.3281	16C	Collet Round	1.3281" (1-21/64")	1716S0.8750	16C	Collet Square	.8750" (7/8")
1716R1.3438	16C	Collet Round	1.3438" (1-11/32")	1716S0.9062	16C	Collet Square	.9062" (29/32")
1716R1.3594	16C	Collet Round	1.3594" (1-23/64")	1716S0.9375	16C	Collet Square	.9375" (15/16")
1716R1.3750	16C	Collet Round	1.3750" (1-3/8")	1716S0.9688	16C	Collet Square	.9688" (31/32")
1716R1.3906	16C	Collet Round	1.3906" (1-25/64")	1716S1.0000	16C	Collet Square	1"
1716R1.4062	16C	Collet Round	1.4062" (1-13/32")	1716S1.0313	16C	Collet Square	1.0313" (1-1/32")
1716R1.4219	16C	Collet Round	1.4219" (1-27/64")	1716S1.0625	16C	Collet Square	1.0625" (1-1/16")
1716R1.4375	16C	Collet Round	1.4375" (1-7/16")	1716S1.0938	16C	Collet Square	1.0938" (1-3/32")
1716R1.4531	16C	Collet Round	1.4531" (1-29/64")	1716S1.1250	16C	Collet Square	1.1250" (1-1/8")

<b>HARDINGE 16C</b>			
<b>Dimensions Metric (Carbide)</b>			
<b>Specification:</b>	d= 47.98		
	L=114.5		
	D=57.4		
$\alpha$ :	10°		
<b>Nann No.</b>	47.5X1.75		
<b>Order No.</b>	<b>Product Title</b>	<b>Order No.</b>	<b>Product Title</b>
2716R2.0	16C Collet Round 2.0m/m	2716R37.5	16C Collet Round 37.5m/m
2716R2.5	16C Collet Round 2.5m/m	2716R38.0	16C Collet Round 38.0m/m
2716R3.0	16C Collet Round 3.0m/m		

2716R3.5	16C	Collet Round	3.5m/m	2716R38.5	16C	Collet Round	38.5m/m
2716R4.0	16C	Collet Round	4.0m/m	2716R39.0	16C	Collet Round	39.0m/m
2716R4.5	16C	Collet Round	4.5m/m	2716R39.5	16C	Collet Round	39.5m/m
2716R5.0	16C	Collet Round	5.0m/m	2716R40.0	16C	Collet Round	40.0m/m
2716R5.5	16C	Collet Round	5.5m/m	<b>Hexagon</b>			
2716R6.0	16C	Collet Round	6.0m/m	2716H3.0	16C	Collet Hexagon	3.0m/m
2716R6.5	16C	Collet Round	6.5m/m	2716H4.0	16C	Collet Hexagon	4.0m/m
2716R7.0	16C	Collet Round	7.0m/m	2716H5.0	16C	Collet Hexagon	5.0m/m
2716R7.5	16C	Collet Round	7.5m/m	2716H6.0	16C	Collet Hexagon	6.0m/m
2716R8.0	16C	Collet Round	8.0m/m	2716H7.0	16C	Collet Hexagon	7.0m/m
2716R8.5	16C	Collet Round	8.5m/m	2716H8.0	16C	Collet Hexagon	8.0m/m
2716R9.0	16C	Collet Round	9.0m/m	2716H9.0	16C	Collet Hexagon	9.0m/m
2716R9.5	16C	Collet Round	9.5m/m	2716H10.0	16C	Collet Hexagon	10.0m/m
2716R10.0	16C	Collet Round	10.0m/m	2716H11.0	16C	Collet Hexagon	11.0m/m
2716R10.5	16C	Collet Round	10.5m/m	2716H12.0	16C	Collet Hexagon	12.0m/m
2716R11.0	16C	Collet Round	11.0m/m	2716H13.0	16C	Collet Hexagon	13.0m/m
2716R11.5	16C	Collet Round	11.5m/m	2716H14.0	16C	Collet Hexagon	14.0m/m
2716R12.0	16C	Collet Round	12.0m/m	2716H15.0	16C	Collet Hexagon	15.0m/m
2716R12.5	16C	Collet Round	12.5m/m	2716H16.0	16C	Collet Hexagon	16.0m/m
2716R13.0	16C	Collet Round	13.0m/m	2716H17.0	16C	Collet Hexagon	17.0m/m
2716R13.5	16C	Collet Round	13.5m/m	2716H18.0	16C	Collet Hexagon	18.0m/m
2716R14.0	16C	Collet Round	14.0m/m	2716H19.0	16C	Collet Hexagon	19.0m/m
2716R14.5	16C	Collet Round	14.5m/m	2716H20.0	16C	Collet Hexagon	20.0m/m
2716R15.0	16C	Collet Round	15.0m/m	2716H21.0	16C	Collet Hexagon	21.0m/m
2716R15.5	16C	Collet Round	15.5m/m	2716H22.0	16C	Collet Hexagon	22.0m/m
2716R16.0	16C	Collet Round	16.0m/m	2716H23.0	16C	Collet Hexagon	23.0m/m
2716R16.5	16C	Collet Round	16.5m/m	2716H24.0	16C	Collet Hexagon	24.0m/m
2716R17.0	16C	Collet Round	17.0m/m	2716H25.0	16C	Collet Hexagon	25.0m/m
2716R17.5	16C	Collet Round	17.5m/m	2716H26.0	16C	Collet Hexagon	26.0m/m
2716R18.0	16C	Collet Round	18.0m/m	2716H27.0	16C	Collet Hexagon	27.0m/m
2716R18.5	16C	Collet Round	18.5m/m	2716H28.0	16C	Collet Hexagon	28.0m/m
2716R19.0	16C	Collet Round	19.0m/m	2716H29.0	16C	Collet Hexagon	29.0m/m
2716R19.5	16C	Collet Round	19.5m/m	2716H30.0	16C	Collet Hexagon	30.0m/m
2716R20.0	16C	Collet Round	20.0m/m	2716H31.0	16C	Collet Hexagon	31.0m/m
2716R20.5	16C	Collet Round	20.5m/m	2716H32.0	16C	Collet Hexagon	32.0m/m
2716R21.0	16C	Collet Round	21.0m/m	2716H33.0	16C	Collet Hexagon	33.0m/m
2716R21.5	16C	Collet Round	21.5m/m	2716H34.0	16C	Collet Hexagon	34.0m/m
2716R22.0	16C	Collet Round	22.0m/m	2716H35.0	16C	Collet Hexagon	35.0m/m
2716R22.5	16C	Collet Round	22.5m/m	2716H36.0	16C	Collet Hexagon	36.0m/m
2716R23.0	16C	Collet Round	23.0m/m	<b>Square</b>			
2716R23.5	16C	Collet Round	23.5m/m	2716S3.0	16C	Collet Square	3.0m/m
2716R24.0	16C	Collet Round	24.0m/m	2716S4.0	16C	Collet Square	4.0m/m
2716R24.5	16C	Collet Round	24.5m/m	2716S5.0	16C	Collet Square	5.0m/m
2716R25.0	16C	Collet Round	25.0m/m	2716S6.0	16C	Collet Square	6.0m/m
2716R25.5	16C	Collet Round	25.5m/m	2716S7.0	16C	Collet Square	7.0m/m
2716R26.0	16C	Collet Round	26.0m/m	2716S8.0	16C	Collet Square	8.0m/m
2716R26.5	16C	Collet Round	26.5m/m	2716S9.0	16C	Collet Square	9.0m/m
2716R27.0	16C	Collet Round	27.0m/m	2716S10.0	16C	Collet Square	10.0m/m

2716R27.5	16C	Collet Round	27.5m/m	2716S11.0	16C	Collet Square	11.0m/m
2716R28.0	16C	Collet Round	28.0m/m	2716S12.0	16C	Collet Square	12.0m/m
2716R28.5	16C	Collet Round	28.5m/m	2716S13.0	16C	Collet Square	13.0m/m
2716R29.0	16C	Collet Round	29.0m/m	2716S14.0	16C	Collet Square	14.0m/m
2716R29.5	16C	Collet Round	29.5m/m	2716S15.0	16C	Collet Square	15.0m/m
2716R30.0	16C	Collet Round	30.0m/m	2716S16.0	16C	Collet Square	16.0m/m
2716R30.5	16C	Collet Round	30.5m/m	2716S17.0	16C	Collet Square	17.0m/m
2716R31.0	16C	Collet Round	31.0m/m	2716S18.0	16C	Collet Square	18.0m/m
2716R31.5	16C	Collet Round	31.5m/m	2716S19.0	16C	Collet Square	19.0m/m
2716R32.0	16C	Collet Round	32.0m/m	2716S20.0	16C	Collet Square	20.0m/m
2716R32.5	16C	Collet Round	32.5m/m	2716S21.0	16C	Collet Square	21.0m/m
2716R33.0	16C	Collet Round	33.0m/m	2716S22.0	16C	Collet Square	22.0m/m
2716R33.5	16C	Collet Round	33.5m/m	2716S23.0	16C	Collet Square	23.0m/m
2716R34.0	16C	Collet Round	34.0m/m	2716S24.0	16C	Collet Square	24.0m/m
2716R34.5	16C	Collet Round	34.5m/m	2716S25.0	16C	Collet Square	25.0m/m
2716R35.0	16C	Collet Round	35.0m/m	2716S26.0	16C	Collet Square	26.0m/m
2716R35.5	16C	Collet Round	35.5m/m	2716S27.0	16C	Collet Square	27.0m/m
2716R36.0	16C	Collet Round	36.0m/m	2716S28.0	16C	Collet Square	28.0m/m
2716R36.5	16C	Collet Round	36.5m/m	2716S29.0	16C	Collet Square	29.0m/m
2716R37.0	16C	Collet Round	37.0m/m				

<b>HARDINGE 16C</b>			
<b>Dimensions inches (Carbide)</b>			
<b>Specification:</b>	d= 1.889"		
	L=4.516"		
	D=2.260"		
$\alpha$ :	10°		
<b>Nann No.</b>	1.870"X1.75		
<b>Order No.</b>	<b>Product Title</b>		
2716R0.0781	16C Collet Round .0781" (5/64")	<b>Order No.</b>	<b>Product Title</b>
2716R0.0938	16C Collet Round .0938" (3/32")	2716R1.4531	16C Collet Round 1.4531" (1-29/64")
2716R0.1094	16C Collet Round .1094" (7/64")	2716R1.4688	16C Collet Round 1.4688" (1-15/32")
2716R0.1250	16C Collet Round .1250" (1/8")	2716R1.4844	16C Collet Round 1.4844" (1-31/64")
2716R0.1406	16C Collet Round .1406" (9/64")	2716R1.5000	16C Collet Round 1.5000"(1-1/2")
2716R0.1562	16C Collet Round .1562" (5/32")	2716R1.5156	16C Collet Round 1.5156" (1-33/64")
2716R0.1719	16C Collet Round .1719" (11/64")	2716R1.5312	16C Collet Round 1.5312" (1-17/32")
2716R0.1875	16C Collet Round .1875" (3/16")	2716R1.5469	16C Collet Round 1.5469" (1-35/64")
2716R0.2031	16C Collet Round .2031" (13/64")	2716R1.5625	16C Collet Round 1.5625" (1-9/16")
2716R0.2188	16C Collet Round .2188" (7/32")	2716R1.5781	16C Collet Round 1.5781" (1-37/64")
2716R0.2344	16C Collet Round .2344" (15/64")	<b>Hexagon</b>	
2716R0.2500	16C Collet Round .2500" (1/4")	2716H0.1250	16C Collet Hexagon .1250" (1/8")
2716R0.2656	16C Collet Round .2656" (17/64")	2716H0.1562	16C Collet Hexagon .1562" (5/32")
2716R0.2812	16C Collet Round .2812" (9/32")	2716H0.1875	16C Collet Hexagon .1875" (3/16")
2716R0.2969	16C Collet Round .2969" (19/64")	2716H0.2188	16C Collet Hexagon .2188" (7/32")
2716R0.3125	16C Collet Round .3125" (5/16")	2716H0.2500	16C Collet Hexagon .2500" (1/4")
2716R0.3281	16C Collet Round .3281" (21/64")	2716H0.2812	16C Collet Hexagon .2812" (9/32")
2716R0.3438	16C Collet Round .3438" (11/32")	2716H0.3125	16C Collet Hexagon .3125" (5/16")
2716R0.3594	16C Collet Round .3594" (23/64")	2716H0.3438	16C Collet Hexagon .3438" (11/32")

2716R0.3750	16C	Collet Round	.3750" (3/8")	2716H0.3750	16C	Collet Hexagon	.3750" (3/8")
2716R0.3906	16C	Collet Round	.3906" (25/64")	2716H0.4062	16C	Collet Hexagon	.4062" (13/32")
2716R0.4062	16C	Collet Round	.4062" (13/32")	2716H0.4375	16C	Collet Hexagon	.4375" (7/16")
2716R0.4219	16C	Collet Round	.4219" (27/64")	2716H0.4688	16C	Collet Hexagon	.4688" (15/32")
2716R0.4375	16C	Collet Round	.4375" (7/16")	2716H0.5000	16C	Collet Hexagon	.5000"(1/2")
2716R0.4531	16C	Collet Round	.4531" (29/64")	2716H0.5312	16C	Collet Hexagon	.5312"(17/32")
2716R0.4688	16C	Collet Round	.4688" (15/32")	2716H0.5625	16C	Collet Hexagon	.5625" (9/16")
2716R0.4844	16C	Collet Round	.4844" (31/64")	2716H0.5938	16C	Collet Hexagon	.5938" (19/32")
2716R0.5000	16C	Collet Round	.5000"(1/2")	2716H0.6250	16C	Collet Hexagon	.6250" (5/8")
2716R0.5156	16C	Collet Round	.5156" (33/64")	2716H0.6562	16C	Collet Hexagon	.6562" (21/32")
2716R0.5312	16C	Collet Round	.5312" (17/32")	2716H0.6875	16C	Collet Hexagon	.6875" (11/16")
2716R0.5469	16C	Collet Round	.5469" (35/64")	2716H0.7188	16C	Collet Hexagon	.7188" (23/32")
2716R0.5625	16C	Collet Round	.5625" (9/16")	2716H0.7500	16C	Collet Hexagon	.7500" (3/4")
2716R0.5781	16C	Collet Round	.5781" (37/64")	2716H0.7812	16C	Collet Hexagon	.7812" (25/32")
2716R0.5938	16C	Collet Round	.5938" (19/32")	2716H0.8125	16C	Collet Hexagon	.8125" (13/16")
2716R0.6094	16C	Collet Round	.6094" (39/64")	2716H0.8438	16C	Collet Hexagon	.8438" (27/32")
2716R0.6250	16C	Collet Round	.6250" (5/8")	2716H0.8750	16C	Collet Hexagon	.8750" (7/8")
2716R0.6406	16C	Collet Round	.6406" (41/64")	2716H0.9062	16C	Collet Hexagon	.9062" (29/32")
2716R0.6562	16C	Collet Round	.6562' (21/32")	2716H0.9375	16C	Collet Hexagon	.9375" (15/16")
2716R0.6719	16C	Collet Round	.6719" (43/64")	2716H0.9688	16C	Collet Hexagon	.9688" (31/32")
2716R0.6875	16C	Collet Round	.6875" (11/16")	2716H1.0000	16C	Collet Hexagon	1"
2716R0.7031	16C	Collet Round	.7031" (45/64")	2716H1.0313	16C	Collet Hexagon	1.0313" (1-1/32")
2716R0.7188	16C	Collet Round	.7188" (23/32")	2716H1.0625	16C	Collet Hexagon	1.0625" (1-1/16")
2716R0.7344	16C	Collet Round	.7344" (47/64")	2716H1.0938	16C	Collet Hexagon	1.0938" (1-3/32")
2716R0.7500	16C	Collet Round	.7500" (3/4")	2716H1.1250	16C	Collet Hexagon	1.1250" (1-1/8")
2716R0.7656	16C	Collet Round	.7656" (49/64")	2716H1.1562	16C	Collet Hexagon	1.1562" (1-5/32")
2716R0.7812	16C	Collet Round	.7812" (25/32")	2716H1.1875	16C	Collet Hexagon	1.1875" (1-3/16")
2716R0.7969	16C	Collet Round	.7969" (51/64")	2716H1.2188	16C	Collet Hexagon	1.2188" (1-7/32")
2716R0.8125	16C	Collet Round	.8125" (13/16")	2716H1.2500	16C	Collet Hexagon	1.2500" (1-1/4")
2716R0.8281	16C	Collet Round	.8281' (53/64")	2716H1.2812	16C	Collet Hexagon	1.2812" (1-9/32")
2716R0.8438	16C	Collet Round	.8438" (27/32")	2716H1.3125	16C	Collet Hexagon	1.3125" (1-5/16")
2716R0.8594	16C	Collet Round	.8594" (55/64")	2716H1.3438	16C	Collet Hexagon	1.3438" (1-11/32")
2716R0.8750	16C	Collet Round	.8750" (7/8")	2716H1.3750	16C	Collet Hexagon	1.3750" (1-3/8")
2716R0.8906	16C	Collet Round	.8906" (57/64")	2716H1.4062	16C	Collet Hexagon	1.4062" (1-13/32")
2716R0.9062	16C	Collet Round	.9062" (29/32")	<b>Square</b>			
2716R0.9219	16C	Collet Round	.9219" (59/64")	2716S0.1250	16C	Collet Square	.1250" (1/8")
2716R0.9375	16C	Collet Round	.9375" (15/16")	2716S0.1562	16C	Collet Square	.1562" (5/32")
2716R0.9531	16C	Collet Round	.9531" (61/64")	2716S0.1875	16C	Collet Square	.1875" (3/16")
2716R0.9688	16C	Collet Round	.9688" (31/32")	2716S0.2188	16C	Collet Square	.2188" (7/32")
2716R0.9844	16C	Collet Round	.9844" (63/64")	2716S0.2500	16C	Collet Square	.2500" (1/4")
2716R1.0000	16C	Collet Round	1"	2716S0.2812	16C	Collet Square	.2812" (9/32")
2716R1.0156	16C	Collet Round	1.0156" (1-1/64")	2716S0.3125	16C	Collet Square	.3125" (5/16")
2716R1.0313	16C	Collet Round	1.0313" (1-1/32")	2716S0.3438	16C	Collet Square	.3438" (11/32")
2716R1.0469	16C	Collet Round	1.0469" (1-3/64")	2716S0.3750	16C	Collet Square	.3750" (3/8")
2716R1.0625	16C	Collet Round	1.0625" (1-1/16")	2716S0.4062	16C	Collet Square	.4062" (13/32")
2716R1.0781	16C	Collet Round	1.0781" (1-5/64")	2716S0.4375	16C	Collet Square	.4375" (7/16")
2716R1.0938	16C	Collet Round	1.0938" (1-3/32")	2716S0.4688	16C	Collet Square	.4688" (15/32")
2716R1.1094	16C	Collet Round	1.1094" (1-7/64")	2716S0.5000	16C	Collet Square	.5000"(1/2")

2716R1.1250	16C	Collet Round	1.1250" (1-1/8")	2716S0.5312	16C	Collet Square	.5312" (17/32")
2716R1.1406	16C	Collet Round	1.1406" (1-9/64")	2716S0.5625	16C	Collet Square	.5625" (9/16")
2716R1.1562	16C	Collet Round	1.1562" (1-5/32")	2716S0.5938	16C	Collet Square	.5938" (19/32")
2716R1.1719	16C	Collet Round	1.1719" (1-11/64")	2716S0.6250	16C	Collet Square	.6250" (5/8")
2716R1.1875	16C	Collet Round	1.1875" (1-3/16")	2716S0.6562	16C	Collet Square	.6562" (21/32")
2716R1.2031	16C	Collet Round	1.2031" (1-13/64")	2716S0.6875	16C	Collet Square	.6875" (11/16")
2716R1.2188	16C	Collet Round	1.2188" (1-7/32")	2716S0.7188	16C	Collet Square	.7188" (23/32")
2716R1.2344	16C	Collet Round	1.2344" (1-15/64")	2716S0.7500	16C	Collet Square	.7500" (3/4")
2716R1.2500	16C	Collet Round	1.2500" (1-1/4")	2716S0.7812	16C	Collet Square	.7812" (25/32")
2716R1.2656	16C	Collet Round	1.2656" (1-17/64")	2716S0.8125	16C	Collet Square	.8125" (13/16")
2716R1.2812	16C	Collet Round	1.2812" (1-9/32")	2716S0.8438	16C	Collet Square	.8438" (27/32")
2716R1.2969	16C	Collet Round	1.2969" (1-19/64")	2716S0.8750	16C	Collet Square	.8750" (7/8")
2716R1.3125	16C	Collet Round	1.3125" (1-5/16")	2716S0.9062	16C	Collet Square	.9062" (29/32")
2716R1.3281	16C	Collet Round	1.3281" (1-21/64")	2716S0.9375	16C	Collet Square	.9375" (15/16")
2716R1.3438	16C	Collet Round	1.3438" (1-11/32")	2716S0.9688	16C	Collet Square	.9688" (31/32")
2716R1.3594	16C	Collet Round	1.3594" (1-23/64")	2716S1.0000	16C	Collet Square	1"
2716R1.3750	16C	Collet Round	1.3750" (1-3/8")	2716S1.0313	16C	Collet Square	1.0313" (1-1/32")
2716R1.3906	16C	Collet Round	1.3906" (1-25/64")	2716S1.0625	16C	Collet Square	1.0625" (1-1/16")
2716R1.4062	16C	Collet Round	1.4062" (1-13/32")	2716S1.0938	16C	Collet Square	1.0938" (1-3/32")
2716R1.4219	16C	Collet Round	1.4219" (1-27/64")	2716S1.1250	16C	Collet Square	1.1250" (1-1/8")
2716R1.4375	16C	Collet Round	1.4375" (1-7/16")				